

Moovur – technical documentation

Using the Moovur Extensions for incorporating
Mollom Anti-Spam for Joomla

Published: February 2009, version 1.0
Moovum - www.moovum.com

Moovur Technical Documentation

A guide to implement Mollom Anti-Spam into a Joomla Website using Moovur

Copyright

The information, text, names, images, photos, logos and Icons are distributed as is under the license terms listed below. The publication goes without any warranty for commercial and practical use without violating any rights. We are not responsible for legal implications of our content.

We grant you permission to re-use this information under the terms of the [Common Creative Attribution-Noncommercial-Share Alike 3.0 license](#), see also details below. If you create a translation of this document please let us know. The authors of the content represent their own mind. In now way the content is linked to other sites, organizations or individual unless explicitly stated.

Moovum

Moovum is the company that provides web services and web applications based upon the Joomla Application framework and the Joomla content management system. One of the services that is provided by Moovum is Moovur. Moovum is legal copyright holder of all material provided, that is the code, documentation and support provided via www.moovum.com under terms of use presented on the web site, or material provided.

Moovur

Moovur is a Joomla 1.5 native extension containing a Joomla 1.5 native component and several Joomla 1.5 native plugins that implements the Mollom Anti-Spam service into the core distribution of Joomla. Moovur is not only an extension that implements Mollom, it also is an Application Programming Interface (API) for third party developers that makes it very easy to implement Mollom in Joomla 1.5 extensions.

More information about Moovur can be found at : <http://www.moovum.com/products/moovur>

Mollom

The web is changing. User contribution is now what makes or breaks a site. Allowing users to react, participate and contribute while still keeping your site under control can be a huge challenge. Mollom is a web service that helps you identify content quality and, more importantly, helps you stop spam on your blog, social network or community website. When site moderation becomes easier, you have more time and energy to interact with your web community.

More information about Mollom can be found at : <http://www.mollom.com>

Table of Contents

1. Preface.....	4
2. Requirements.....	5
3. Installation and updating.....	6
3.1. Installation.....	6
3.2. Updating.....	7
4. Configuration.....	8
4.1. Core/System plugin configuration.....	8
4.2. Moovur Contact Plugin Configuration.....	9
4.3. Moovur User Plugin Configuration.....	10
5. Features and behavior.....	14
5.1. Moovur administration back end component.....	14
5.2. Front End, Site.....	15
6. Testing.....	16
6.1. Testing the Moovur Contact Plugin.....	16
6.2. Testing the Moovur User Plugin.....	16
7. Appendixes.....	18
7.1. Appendix 1: Error codes Moovur.....	18
7.2. Appendix 2: Error codes Moovum.....	19

1. Preface

Moovur has been developed especially for implementation of the Mollom Anti-Spam service on your Joomla! Website. This document will guide you through the basic concepts of Moovur. We will explain how to install, configure and manage Moovur.

We won't cover the concepts of Mollom. There are some excellent pieces of documentation available on the Mollom site, if you want to know more about Mollom please take a closer look at the following documentation:

- Brief description on how Mollom works : <http://mollom.com/how-mollom-works>
- Mollom technical whitepaper : <http://mollom.com/files/mollom-technical-whitepaper.pdf>
- Mollom API documentation : <http://mollom.com/files/mollom-client-api.pdf>

Target Audience

This manual describes how to install and configure the Moovur Anti-Spam solution on a Joomla! Website. It is intended for anyone working with this extension in the back end administration of a Joomla! Site. For information on how to use and navigate the Joomla! Administration, refer to it's documentation available on <http://docs.joomla.org>.

Conventions

- Code samples, functions, variable names, and on are printed in monospace font.
- Filenames and paths are printed in monospace italic font.
- Commands are printed in monospace bold font.
- Elements of graphical user interfaces (such as buttons and field labels) are printed in bold font.
- Component names (such as an application) are capitalized, for example “Administration Interface”.
- In sample URLs, replace “example.com” with the domain name of your site.
- The screen shots in this document might have been modified to fit the page or to illustrate a point, and therefore might not exactly match the display on your site.

Contacting Moovum

For any technical or non-technical questions related to Moovur, please feel free to contact us through <http://moovum.com/contact-us>

We welcome your suggestions and comments on this manual.

2.Requirements

Before you install the Moovur extensions on your Joomla! Website, your web server will have to meet some requirements:

- PHP version 5.2 or higher
- MySQL 4.1 or higher
- Either CURL or FSocketOpen enabled

Note: the installer will auto-detect if requirements are met.

Besides these server requirements you also need to have an account on the Mollom website and obtain what are called a set of public and private keys. Go to <http://mollom.com> to obtain the keys, registration is free, as is the free Anti-Spam service and it's keys.

Mollom comes in two flavors, a [Mollom Free](#) (and limited) subscription and [Mollom Plus](#) (payed) subscription. To get the best protection and more we advice you to take a Mollom plus account.

If you meet all of the above requirements you are ready to proceed to the next step, installing Moovur.

3.Installation and updating

3.1.Installation

The Moovur Anti-Spam solution exists out of 4 extensions:

- Moovur back and administration component containing configuration and logs
- Moovur system plugin
- Moovur contact plugin
- Moovur user plugin

The administration component should speak for it self. It contains a dashboard, and a few more tabs such as configuration, logs and an about page. The component's main purpose is to configure Moovur and display logs and statistics.

The two plugins incorporate the Anti-Spam feature into the Joomla! Core Contact and User component. This means you can add Captcha to your contact form and also to the User login and registration forms.

All three extensions are packaged in one single installer file to make it easy for a site administrator to install Moovur. To install Moovur you need to login to your Joomla! Administrator interface. When you are logged in you go to **Extensions > Install/Uninstall**. From the installer screen you can use one of the 2 first installation options to actually install Moovur (upload package file, install from directory).

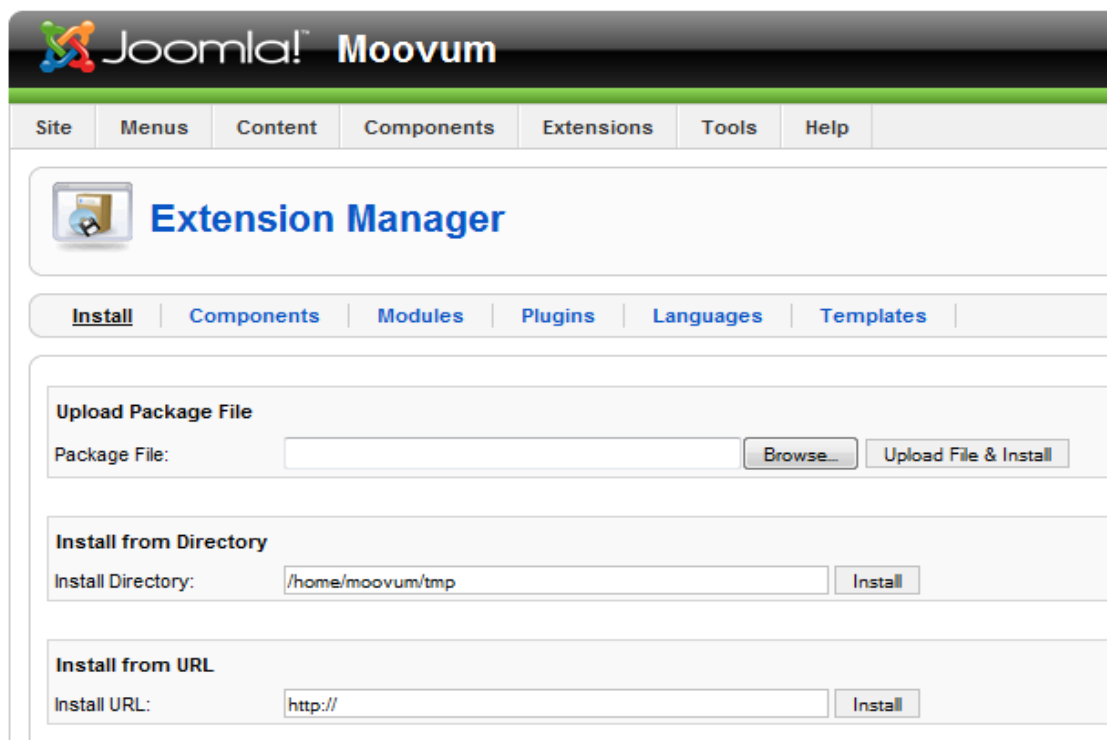


Illustration 1: Joomla! Extension manager, installer

3.2.Updating

We have a simple update procedure in case of new releases. Simply go to the Joomla! Installation screen again and select the Component tab. From this screen, select Moovur, and deinstall the component.

After deinstalling Moovur, you re-install the the newly released Moovur package. This will not only update the administration component, but also the Moovur plugins. During this update process, your data, configuration and log entries will remain untouched.

Note; always make a backup of your current web site before you upgrade.

4. Configuration

After you have successfully installed the back end administration component and its 3 plugins you are ready to configure Moovur. Moovur can be configured in a few places, on the back end administration component and on the Moovur contact and user plugins. We start with the back end administration component.

4.1. Core/System plugin configuration

The Moovur Core/System plugin is configured through the administration back end component. The component exists out of 4 tabs. A dashboard, Configuration, Logs and About tab. We are going to make some configurations on the second tab, Configuration.

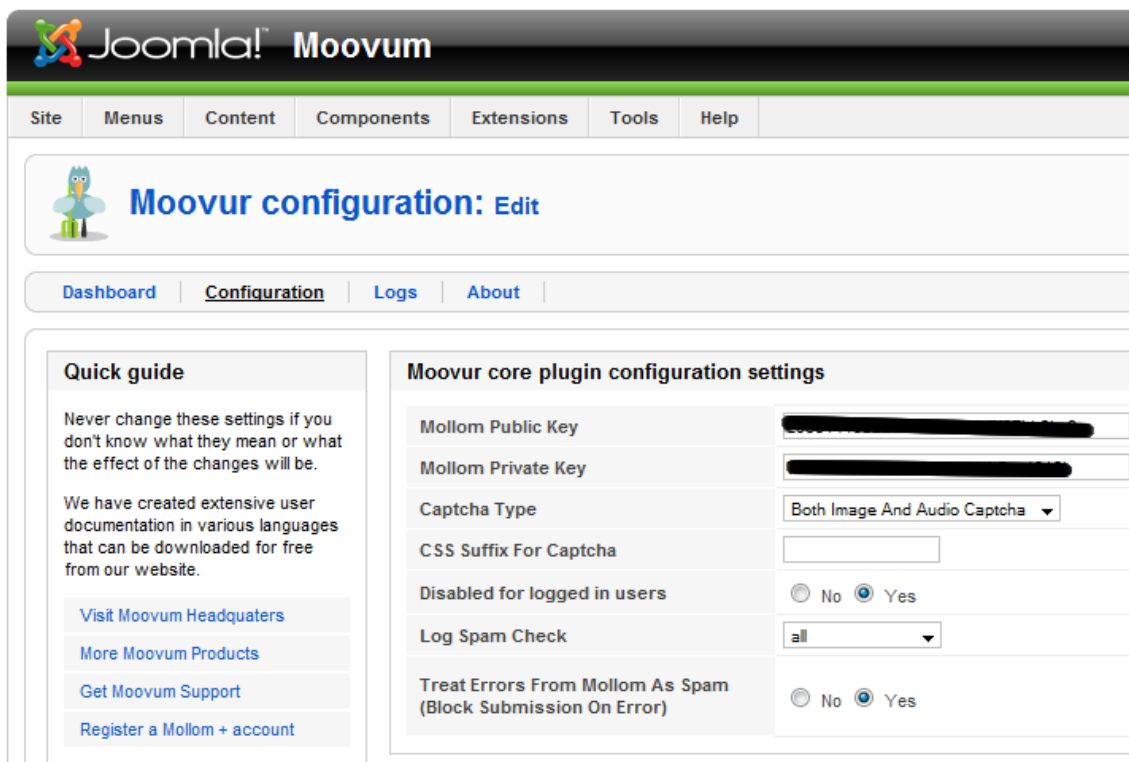


Illustration 2: Moovur Configuration

On the configuration we start with the first two parameters, the “**Mollom Public Key**” and “**Mollom Private Key**”. As described before, you can obtain those keys by registering at mollom.com and sign-up for either a free or plus account.

If you have entered your keys, you select the “**Captcha Type**” parameter where you can select Text, Audio or both Captcha types to be shown on your web site. Now save your configuration.

Basically with configuring the above Moovur will now work on your web site. During the installation it has already enabled all plugins and its configuration. Besides the above parameters, the Configuration tab has a few more parameters:

CSS Suffix for Captcha: with this parameter you can define a CSS class suffix which will be used when a Captcha is shown on your web site. With the CSS suffix you can modify the output of this Captcha.

Disabled for logged in users: this parameter can be set to No and Yes. The default setting is Yes which means that visitors with an account for the site where Moovur is running on, and who are logged in, all Captcha is disabled.

Log Spam Check: this parameter lets you choose which actions are logged. The options available are None, Non-spam only, Spam only and All. By default all actions are logged.

Treat Errors From Mollom As Spam (Block Submission On Error): When Moovur receives an error from Mollom, what should Moovur do with the submitted form data (Should Moovur treat it as spam, and reject it. Or should Moovur assume it's ok, and accept it). This is the Moovur fallback parameter in case the Mollom service is not available.

4.2. Moovur Contact Plugin Configuration

The Contact Plugin is used to provide an Anti-Spam solution on the Joomla! Core Contact component, the contact form available in Joomla!. To access the plugins parameters, in the Joomla! Administration, go to: **Extensions > Plugin Manager**.

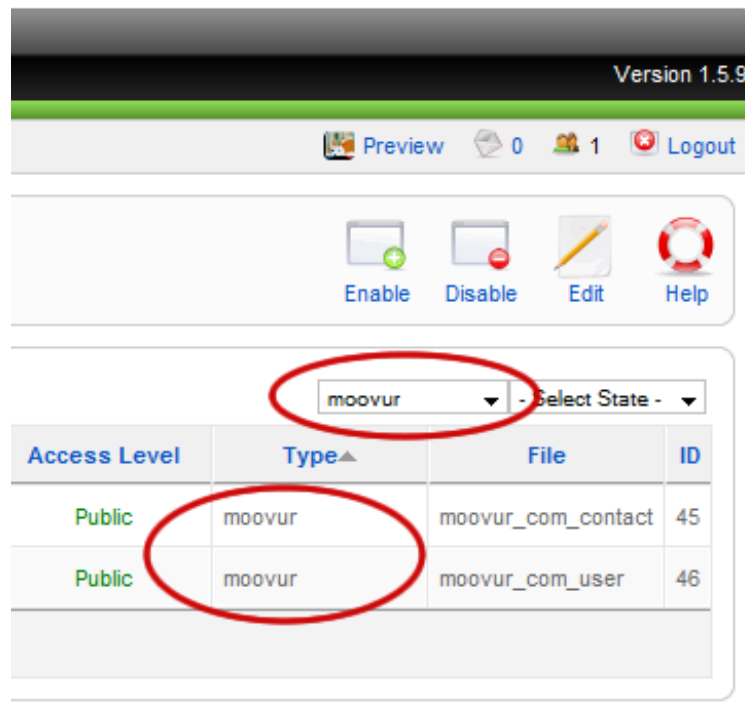
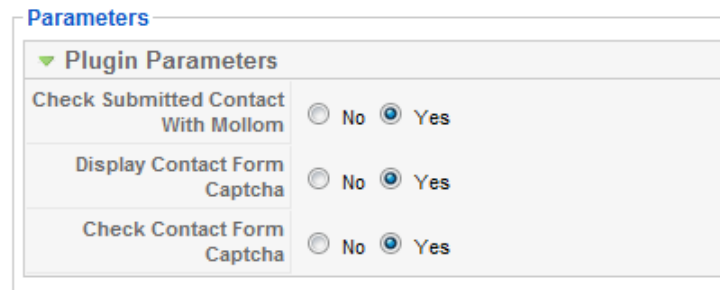


Illustration 3: Plugin Manager screen, select type filter

You can use the “**select type**” filter on the top right of the plugin manager screen to shorten the list of

available plugins. This plugin has 3 parameters:



The screenshot shows a 'Parameters' window for the Moovure Contact Plugin. It contains a section titled 'Plugin Parameters' with three rows of settings, each with radio buttons for 'No' and 'Yes'. The 'Yes' option is selected for all three parameters.

Plugin Parameters	
Check Submitted Contact With Mollom	<input type="radio"/> No <input checked="" type="radio"/> Yes
Display Contact Form Captcha	<input type="radio"/> No <input checked="" type="radio"/> Yes
Check Contact Form Captcha	<input type="radio"/> No <input checked="" type="radio"/> Yes

Illustration 4: Moovure Contact Plugin parameters

Check Submitted Contact With Mollom (No/Yes): allows you to disable/enable the Content check of the Contact form against the Mollom Anti-Spam service. This service determines if content from this form contains spam or not, and accordingly presents the visitor using the Contact form with a Captcha. Disabling this parameter will show the Captcha by default.

Display Contact Form Captcha (No/Yes): allows you to disable/enable the "injection of Captcha html" by the plugin in the component view, in this case the contact form. This parameter can be used in situations where you use layout overrides to tune display, which contain the code to show the Captcha, to prevent the Captcha from showing twice.

Check Contact Form Captcha (No/Yes): used to disable/enable the check for the Captcha configured above, even though the plugin is not displaying, this in situations such as layout overrides. The Display parameters overrides the Check parameter.

4.3. Moovur User Plugin Configuration

The User Plugin is used to provide an anti-spam solution on the Joomla! Core User component. This Core User component provides user registration, user login/logout, forgot password and forgot username actions. All of these actions are supported in the Moovur User Plugin. To access the plugins parameters, in the Joomla! Administration, go to: **Extensions > Plugin Manager**.

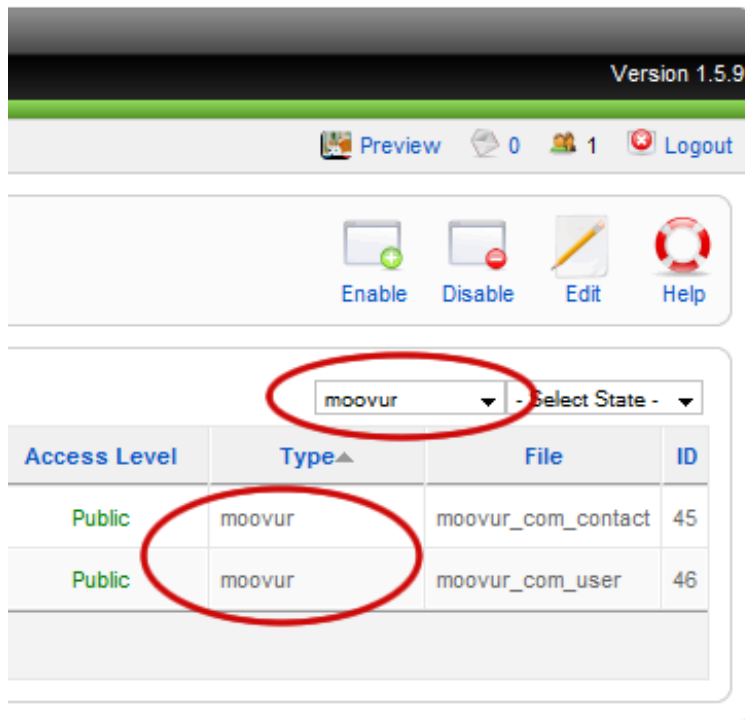


Illustration 5: Plugin Manager screen, select type filter

You can use the “**select type**” filter on the top right of the plugin manager screen to shorten the list of available plugins. The available parameters for this plugin are:

Parameters

▼ Plugin Parameters	
Display Login Captcha	<input checked="" type="radio"/> No <input type="radio"/> Yes
Check Login Captcha	<input checked="" type="radio"/> No <input type="radio"/> Yes
<hr/>	
Display Registration Captcha	<input type="radio"/> No <input checked="" type="radio"/> Yes
Check Registration Captcha	<input type="radio"/> No <input checked="" type="radio"/> Yes
<hr/>	
Display Remind Username Captcha	<input type="radio"/> No <input checked="" type="radio"/> Yes
Check Remind Username Captcha	<input type="radio"/> No <input checked="" type="radio"/> Yes
<hr/>	
Display Password Reset Request Captcha	<input type="radio"/> No <input checked="" type="radio"/> Yes
Check Password Reset Request Captcha	<input type="radio"/> No <input checked="" type="radio"/> Yes
<hr/>	
Display Password Reset Confirmation Captcha	<input type="radio"/> No <input checked="" type="radio"/> Yes
Check Password Reset Confirmation Captcha	<input type="radio"/> No <input checked="" type="radio"/> Yes

Illustration 6: Moovur User Plugin parameters

Display Login Captcha (No/Yes): allows you to disable/enable the "injection of Captcha html" by the plugin in the component view, in this case the login form. This parameter can be used in situations where you use layout overrides to tune display, which contain the code to show the Captcha, to prevent the Captcha from showing twice.

Check Login Captcha (No/Yes): used to disable/enable the check for the Captcha configured above, even though the plugin is not displaying, this in situations such as layout overrides. The Display parameters overrides the Check parameter.

Display Registration Captcha (No/Yes): allows you to disable/enable the "injection of Captcha html" by the plugin in the component view, in this case the registration form. This parameter can be used in situations where you use layout overrides to tune display, which contain the code to show the Captcha, to prevent the Captcha from showing twice.

Check Registration Captcha (No/Yes): used to disable/enable the check for the Captcha configured above, even though the plugin is not displaying, this in situations such as layout overrides. The Display parameters overrides the Check parameter.

Display Remind Username Captcha (No/Yes): allows you to disable/enable the "injection of Captcha

html" by the plugin in the component view, in this case the remind username form. This parameter can be used in situations where you use layout overrides to tune display, which contain the code to show the Captcha, to prevent the Captcha from showing twice.

Check Remind Username Captcha (No/Yes): used to disable/enable the check for the Captcha configured above, even though the plugin is not displaying, this in situations such as layout overrides. The Display parameters overrides the Check parameter.

Display Password Reset Request Captcha (No/Yes): allows you to disable/enable the "injection of Captcha html" by the plugin in the component view, in this case the password reset form. This parameter can be used in situations where you use layout overrides to tune display, which contain the code to show the Captcha, to prevent the Captcha from showing twice.

Check Password Reset Request Captcha (No/Yes): used to disable/enable the check for the Captcha configured above, even though the plugin is not displaying, this in situations such as layout overrides. The Display parameters overrides the Check parameter.

Display Password Reset Confirmation Captcha (No/Yes): allows you to disable/enable the "injection of Captcha html" by the plugin in the password reset confirmation view, in this case the contact form. This parameter can be used in situations where you use layout overrides to tune display, which contain the code to show the Captcha, to prevent the Captcha from showing twice.

Check Password Reset Confirmation Captcha (No/Yes): used to disable/enable the check for the Captcha configured above, even though the plugin is not displaying, this in situations such as layout overrides. The Display parameters overrides the Check parameter.

5.Features and behavior

5.1.Moovur administration back end component

The Moovur Component has a dashboard which displays information for the site administrator. On this dashboard you find a section with version information on Moovur, another section with a usage statistics graph and the last section with information on installed and activated Moovur plugins.

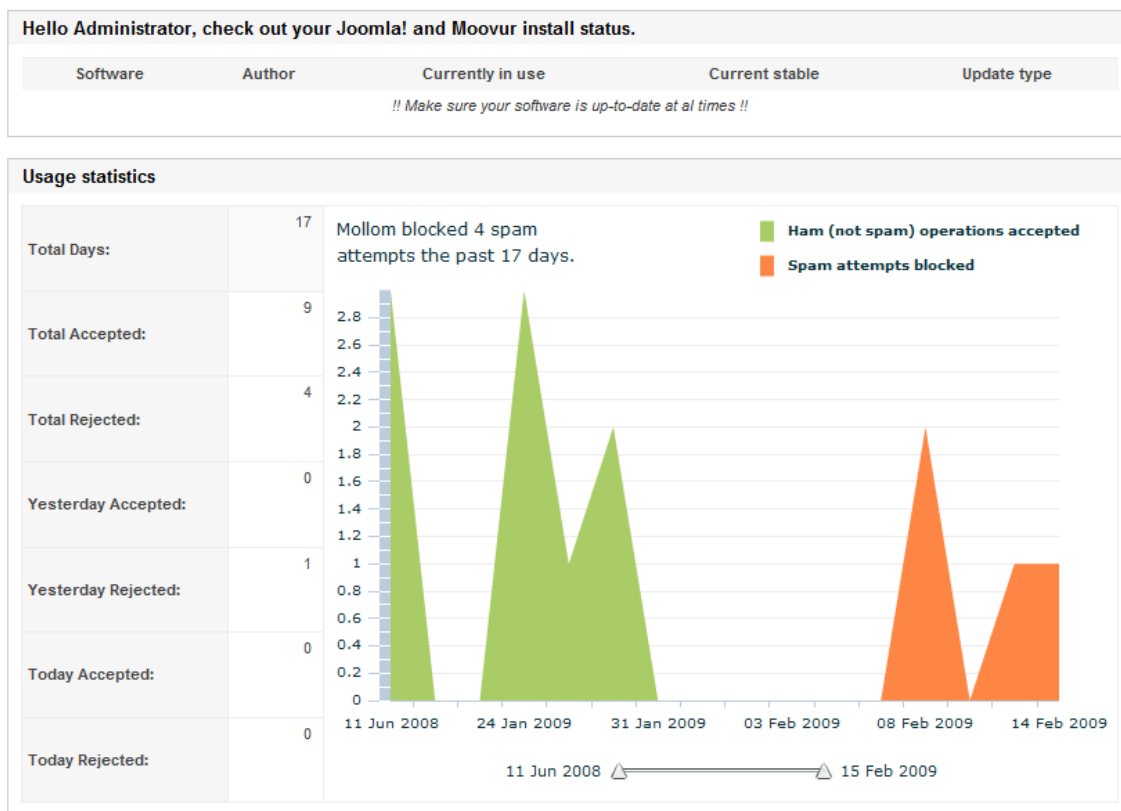


Illustration 7: Moovur Dashboard

There is also a Configuration tab, this has been described in chapter 4.1. Besides that the component also has a Log tab which shows the log for all Moovur actions. It's a complete log of all ham and spam messages coming through, depending on the configuration of the log.

Moovur monitor: list

Dashboard | Configuration | **Logs** | About

Component: [] Form: [] Content: All Content Date: [] Content Details: [] Author Details: []

Moovur Content Monitor Log

#	Component	Form	Status	Date	Content Details	Send Feedback
1	com_contact	com_contact.submit	Good	Friday, 06 February 2009	▼ Crap, Crap...suckers	Feedback Sent
2	com_contact	com_contact.submit	Good	Friday, 06 February 2009	▼	Feedback Sent
3	com_contact	com_contact.submit	Good	Friday, 06 February 2009	▼ Looks Awesome!	▼ Send Feedback
4	com_contact	com_contact.submit	Good	Friday, 06 February 2009	▼ Kwak, kwak	Feedback Sent
5	com_contact	com_contact.submit	Spam	Friday, 06 February 2009	▼ testing if this works	
6	com_contact	com_contact.submit	Good	Friday, 06 February 2009	▼ vxcbcxbv	▼ Send Feedback
7	com_contact	com_contact.submit	Good	Friday, 06 February 2009	▼ aaaaaaaaaaaaaaaaa	▼ Send Feedback

Illustration 8: Moovur Log

5.2.Front End, Site

The front end of the site running Moovur does not really show Moovur features except for the Captcha. This Captcha is presented in both Text and Audio, depending on the Moovur configuration. The text Captcha's are not case sensitive. Audio Captcha's which are of the .mp3 file format, can be played with any regular audio player installed.


- [Extensions](#)
- [Content Layouts](#)
- [Example Pages](#)

Login Form

Username

Password

Remember Me



Enter Captcha

- [Forgot your password?](#)
- [Forgot your username?](#)
- [Create an account](#)

We are Volunteers

Written by Administrator
Saturday, 07 July 2007 09:54

The Joomla Core Team and Working Group members are volunteer developers, designers, administrators and managers who have worked together to take Joomla! to new heights in its relatively short life. Joomla! has some wonderfully talented people taking Open Source concepts to the forefront of industry standards. Joomla! 1.5 is a major leap forward and represents the most exciting Joomla! release in the history of the project.

Last Updated on Saturday, 07 July 2007 09:54

Joomla! License Guidelines

Written by Administrator
Wednesday, 20 August 2008 10:11

This Web site is powered by Joomla! The software and default templates on which it runs are Copyright 2005-2008 [Open Source Matters](#).

Illustration 9: Moovur Captcha

6. Testing

After installation and configuration you are able to test the Moovur anti-spam solution. To test Moovur, you will first need to put your Mollom keys in developer mode.

Go to mollom.com and login with your account. When logged in, use “Manage sites” and click on “edit subscription” for the site in question. On the next page, click on the “Edit” button for the “Site details” part. Scroll down and check the option “Activate Mollom plugin developer mode”. This puts your keys in development e.g. Testing mode. Note that it can take up to 60 minutes for the keys to actually enter this mode.

6.1. Testing the Moovur Contact Plugin

With your Mollom keys in development mode, you are now able to test proper behavior for the Moovur Contact Plugin. Setup a Contact form on your web site that you want to test.

Ham: Fill in the contact form, add the word “ham” in the subject and body of the form and submit. The Moovur/Mollom solution should see this as regular content, not displaying a Captcha, thus letting the e-mail get delivered.

Unsure: Fill in the contact form, add the word “unsure” in the subject and body of the form and submit. The Moovur/Mollom solution is not sure if the content is ham or spam, so it shows a Captcha for the person using the Contact form. In case of an incorrect Captcha the form is rejected, in case of a correct Captcha the e-mail gets delivered.

Spam: Fill in the contact form, add the word “spam” in the subject and body of the form and submit. The Moovur/Mollom solution should see this as spam, and directly reject it as so. The e-mail does not get delivered.

You can also check the log for the above tests. Make sure to put your keys back in production mode with the launch of your site. Note: with keys in development mode, audio Captcha will be incorrect.

6.2. Testing the Moovur User Plugin

With your Mollom keys in development mode you can also test the Moovur User Plugin. By default Moovur is not enable for the Login Form which is part of the User Component. Configure this plugin so Moovur also checks on User login.

Incorrect: login with your account details and for the Captcha use “incorrect”, this should return a message that the Captcha is not correct and does not grant you access to the member area of a Joomla! Site.

Correct: login with your account details and for the Captcha use “correct”, this should grant you access to the member area of a Joomla! Site.

You can also check the log for the above tests. Make sure to put your keys back in production mode with the launch of your site. Note: with keys in development mode, audio Captcha will be incorrect.

7. Appendixes

7.1. Appendix 1: Error codes Moovur

- 66501 - Error getting statistics
- 66502 - Routine server update failed
- 66503 - Error initializing Mollom class
- 66504 - Error checking content via Mollom
- 66505 - Error sending feedback to Mollom
- 66506 - PHP5 required
- 66507 - Could not publish 3pd plugins on install/upgrade
- 66508 - Could not publish core plugin on install/upgrade
- 66509 - Could not find XML setup file
- 66510 - Could not unpublish 3pd plugins on install/upgrade
- 66511 - Could not unpublish core plugin on install/upgrade
- 66512 - Log table does not exist
- 66513 - Could not verify keys with mollom
- 66514 - error saving configuration
- 66515 - Error fetching captcha
- 66516 - Invalid input to Moovur::checkContent
- 66517 - Unexpected return from Mollom in checkContent
- 66518 - Error in checkContent
- 65519 – Curl or fsockopen required

7.2. Appendix 2: Error codes Moovum

66401 - Unknown error reported by Mollom
66402 - Invalid headers returned from Mollom
66403 - No body returned by Mollom call
66404 - unknown Curl error returned
66405 - No more servers available
66406 - Unknown FSocketOpen error returned
66407 - FSocketOpen infinite loop detected
66408 - Illegal method call to Mollom::doCall()
66409 - Public Key not configured
66410 - Private Key not configured
66411 - Server List not populated
66412 - Invalid response for checkContent
66413 - Invalid arguments for checkContent
66414 - Invalid response for checkCaptcha
66415 - Invalid response for getAudioCaptcha
66416 - Invalid response for getImageCaptcha
66417 - Invalid response for getServerList
66418 - Invalid response for getStatistics
66419 - Invalid argument for getStatistics
66420 - Invalid response for sendFeedback
66421 - Invalid argument for sendFeedback
66422 - Invalid response for verifyKey
66423 - Attempt to set invalid variable name
66424 - Expecting Numeric
66425 - Expecting String
66456 - Expecting Array